

# MAPPING INTERNATIONAL RESEARCH ON DOMESTIC VIOLENCE AND WOMEN'S MENTAL HEALTH IN CHINA (2000–2024): TRENDS, THEMES, AND COLLABORATION

Xingcen Liu, Kamal Sabran\*

Department of New Media Design and Technology, School of Arts, Universiti Sains Malaysia, Pulau Pinang, Malaysia

Correspondence: [kamalsabran@usm.my](mailto:kamalsabran@usm.my)

## ABSTRACT

### BACKGROUND

Domestic violence poses a persistent global challenge to public health, deeply affecting women's mental well-being. While growing international attention has turned toward the Chinese context—marked by legal reforms and rising academic output—a coherent, data-driven synthesis of the field's thematic contours and collaborative dynamics remains absent.

### METHODS

We conducted a bibliometric analysis of 184 English-language articles indexed in Web of Science and Scopus (2000–2024). Using Biblioshiny and VOSviewer, we mapped research output, institutional and geographic trends, international collaboration, and thematic evolution across two decades.

### RESULTS

Following the enactment of China's Anti-Domestic Violence Law in 2016, scholarly production surged. China and the United States emerged as central contributors, with Hong Kong institutions bridging international networks. Thematic trajectories revealed a shift from descriptive epidemiology to focused engagement with trauma recovery, gender-responsive approaches, and culturally informed care strategies.

### CONCLUSION

This study offers the first comprehensive bibliometric mapping of global research on domestic violence and women's mental health in the Chinese context. By delineating evolving research priorities and intellectual linkages, it highlights the growing integration of localized social issues into global health governance discourses. These findings may inform evidence-based service planning, cross-cultural knowledge exchange, and trauma-informed mental health policymaking.

### KEYWORDS

domestic violence; women's mental health; china; bibliometric analysis; international research trends; trauma-informed care

## INTRODUCTION

Domestic violence remains a persistent global public health concern and a grave violation of human rights, with significant implications for women's mental health [1]. For the purposes of this study, "domestic violence" (DV) is used as a broad term encompassing physical, sexual, psychological, and economic abuse within a family or household context [2]. A significant and frequently studied subcategory within this field is "intimate partner violence" (IPV), which refers specifically to violence perpetrated by a current or former spouse or partner [3]. While this paper maintains "domestic violence" as its primary framework, the specific prominence of IPV as a central theme discovered within the scholarly literature is a key focus of our analysis. Numerous studies have established strong associations between exposure to violence and elevated risks of depression, anxiety, and post-traumatic stress disorder [4-6]. In China, where traditional norms often cast family conflict as a private matter, such violence has long been underreported and undertreated [7]. The enactment of the Anti-Domestic Violence Law in 2016 marked a critical policy shift, signaling heightened legal and institutional recognition [8]. Simultaneously, international scholars and policy actors have increasingly examined how domestic violence is addressed in the Chinese context [9].

Globally, scholarly inquiry into domestic violence has produced a rich and multifaceted landscape. Systematic reviews consistently underscore the problem's severity; for instance, research focusing on South Asia—a region with one of the world's highest IPV prevalence rates—has documented its devastating physical and psychological consequences [10]. Concurrently, the scholarly focus has increasingly shifted from problem description toward the exploration of solutions, with interventions centered on women's empowerment emerging as a major global research theme [11]. This global discourse is also marked by a growing reflexivity concerning research methodology itself, as evidenced by studies during the COVID-19 pandemic that highlighted how different data collection methods significantly impact findings [12]. Against this broad scholarly backdrop, a systematic mapping of the international research landscape focused on the specific context of China is therefore both necessary and timely.

While the literature on domestic violence and women's mental health in China has expanded, existing reviews remain largely descriptive—focusing on prevalence, trends, and associated risk factors [13-15]. What remains absent is a structured, data-driven overview of how the field has evolved: thematically, institutionally, and globally. Bibliometric analysis addresses this gap by mapping research trajectories and revealing how regionally embedded issues intersect with broader scholarly discourse [16].

This study conducts a bibliometric analysis of English-language publications from Web of Science and Scopus (2000–2024) concerning domestic violence and women's mental health in China. Using visualization and co-occurrence techniques, it examines growth trends, geographic and institutional distribution, international collaboration, and thematic shifts. While a growing body of literature has explored various facets of this issue, a comprehensive, data-driven synthesis of the international English-language scholarly discourse has, to our knowledge, been absent. This study addresses this critical gap by providing the first structured map of the field's intellectual landscape, thereby widening the evidence base for health management and offering actionable insights for service managers and policymakers.

## METHODS

This bibliometric analysis followed a three-stage process: data retrieval, performance analysis, and network analysis. The aim was to map the international research landscape on domestic violence and women's mental health in the Chinese context.

### SEARCH STRATEGY

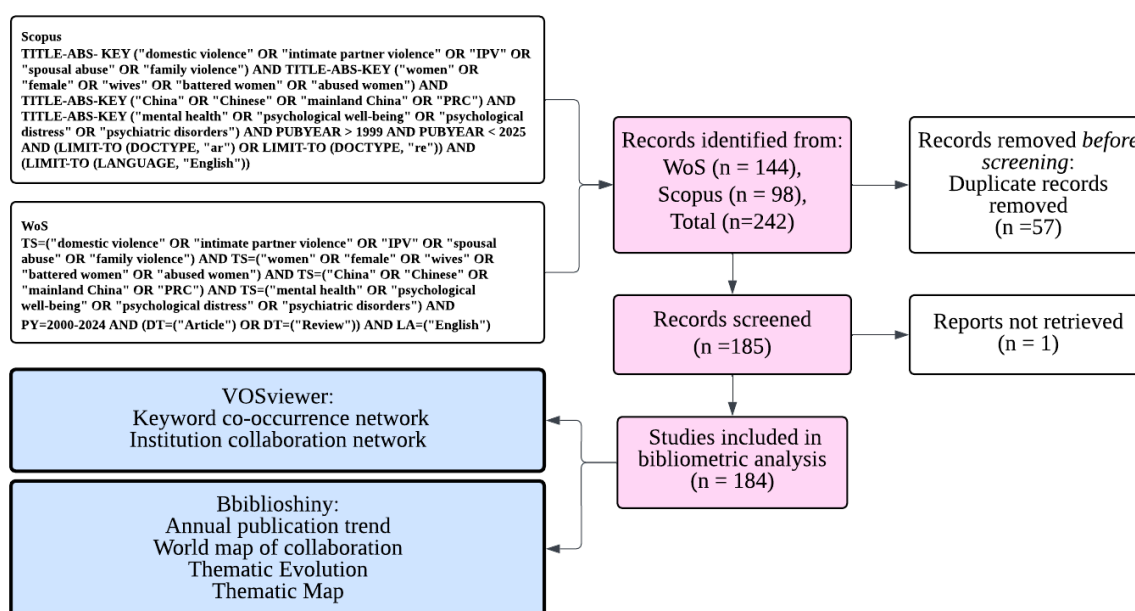
This bibliometric study was based on publications retrieved from two major citation databases—Scopus and Web of Science (WoS) - selected for their disciplinary breadth in public health, psychiatry, and the social sciences. The search was conducted on March 31, 2025, and restricted to literature published between January 2000 and December 2024. The

2000–2024 timeframe was strategically chosen to align with the establishment of comprehensive digital indexing within the core scholarly databases central to this analysis, and the launch of major global initiatives like the UN Millennium Development Goals that spurred research on gender equality and women's health, while also providing a robust period for analyzing trends surrounding China's 2016 Anti-Domestic Violence Law.

An advanced Boolean search strategy was applied across the title, abstract, and keyword fields, targeting three conceptual domains: domestic violence (e.g., "domestic violence," "intimate partner violence," "battered women"), mental health (e.g., "mental health," "depression," "anxiety"), and China (e.g., "China," "Chinese"). Filters were embedded directly in the query to include only English-language publications and to limit document types to articles and reviews—excluding conference proceedings, book chapters, editorials, and other grey literature.

An initial pool of 242 records was retrieved (WoS = 144; Scopus = 98). Duplicate entries were identified and removed using the duplicated Matching function in the bibliometrix R package, which compares records by title, DOI, and author metadata. One record was excluded due to access restrictions, yielding a final dataset of 184 unique documents. Table 1 outlines the inclusion and exclusion criteria, and the overall data collection and analysis workflow is illustrated in Figure 1.

**FIGURE 1. WORKFLOW OF DATA COLLECTION, SCREENING, AND BIBLIOMETRIC ANALYSIS**



## DATA PROCESSING AND BIBLIOMETRIC TOOLS

Bibliographic metadata were exported in two formats to accommodate different analytical tools. CSV files were imported into Biblioshiny - the graphical interface of the *bibliometrix* R package—for performance and conceptual structure analyses. Plain text (.txt) files were formatted for VOSviewer to map co-occurrence and collaboration networks. All files included standardized fields such as titles, authors, keywords, publication years, document types, and citation counts. As is typical in bibliometric research, the analysis was based on metadata rather than full-text content [17-18].

In Biblioshiny, we analyzed annual publication trends, international collaboration networks, thematic evolution using Sankey diagrams, and strategic thematic maps derived from the Keyword Plus field [17, 19]. In VOSviewer, keyword co-occurrence networks were generated to identify thematic clusters, and overlay visualizations highlighted temporal dynamics by color-coding keywords by average publication year. Institution-level co-authorship networks were also mapped to reveal organizational collaborations. All keyword-based analyses consistently used the Keyword Plus field across tools.

## INCLUSION AND EXCLUSION CRITERIA

The inclusion and exclusion criteria applied during article screening are summarized in Table 1.

TABLE 1. INCLUSION AND EXCLUSION CRITERIA FOR ARTICLE SCREENING

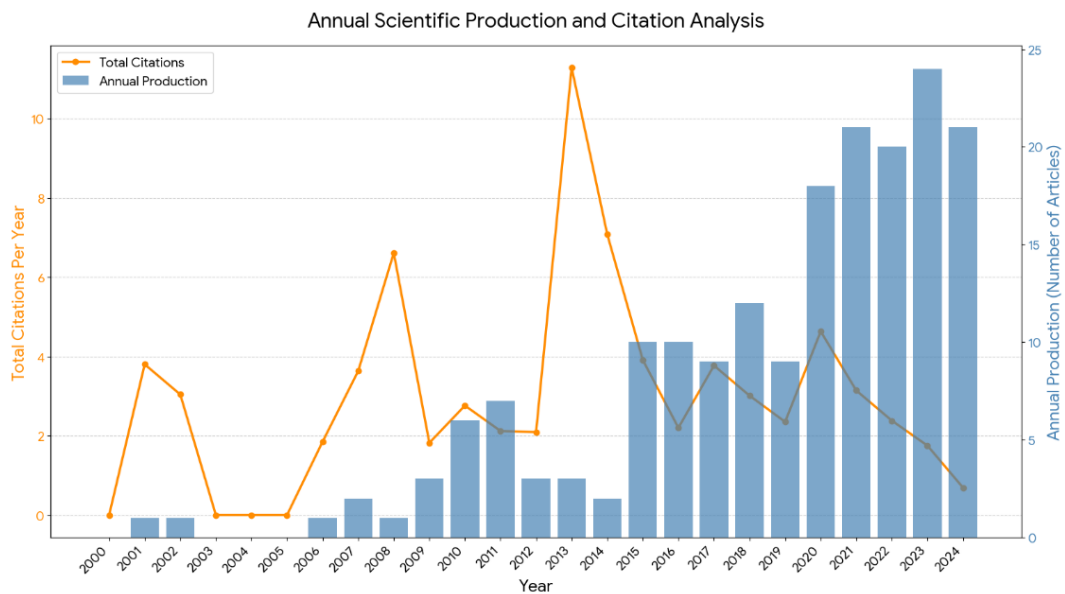
Database Criteria	Inclusion	Exclusion
Document type	Article, review	Conference papers, editorials, and book chapters, etc.
Language	English	Non-English
Timeline	2000-2024	Before 2000
Location	Worldwide	Not applicable

## RESULTS

### SCIENTIFIC OUTPUT AND NATIONAL CONTRIBUTIONS

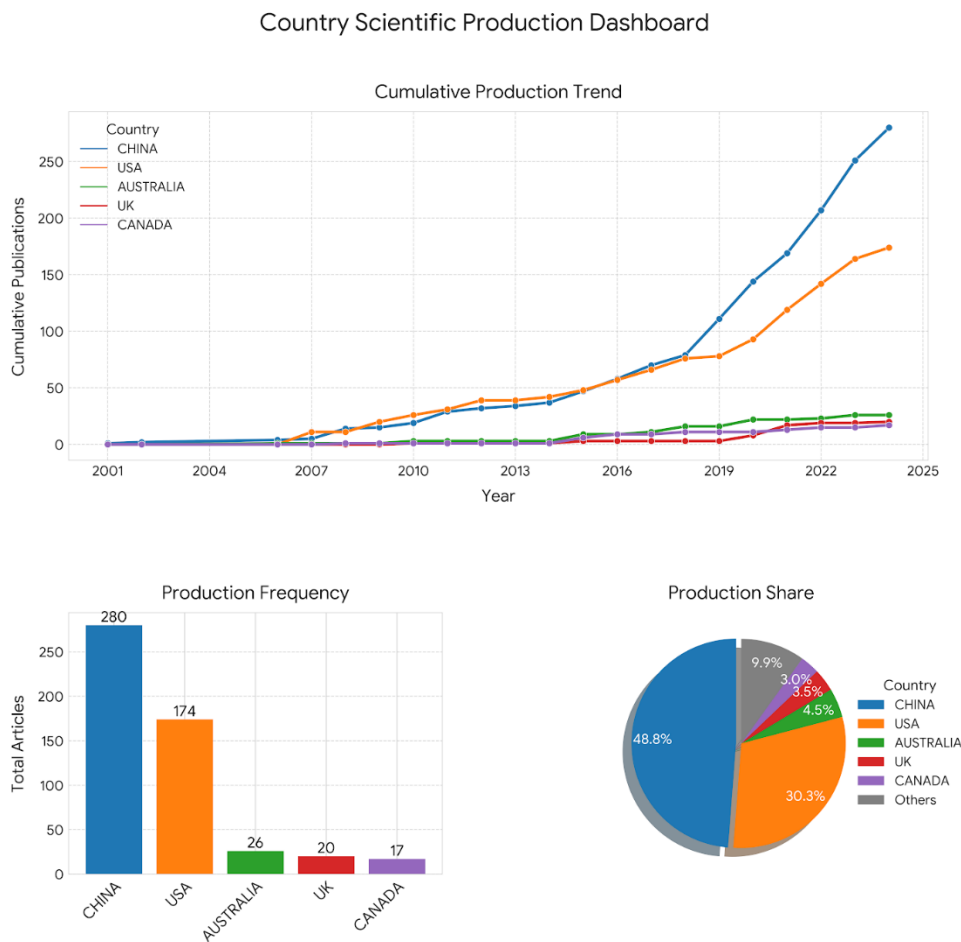
Research output on domestic violence and women's mental health in China has steadily increased over the past two decades (Figure 2). No indexed publications were retrieved for 2000. From 2001 to 2006, output remained minimal, averaging one to two articles annually. A gradual upward trend began in 2007, plateaued in 2015–2016 (10 publications each year), and accelerated thereafter—reaching 18 articles in 2020 and peaking at 24 in 2023.

FIGURE 2. ANNUAL RESEARCH OUTPUT AND CITATION ANALYSIS



In terms of citation impact, earlier publications tend to be more influential. Citation peaks in 2008 and 2013 suggest the presence of foundational studies that have attracted sustained academic attention. Recent publications are still accruing citations and may require time to establish long-term influence.

**FIGURE 3. COUNTRY SCIENTIFIC PRODUCTION DASHBOARD**

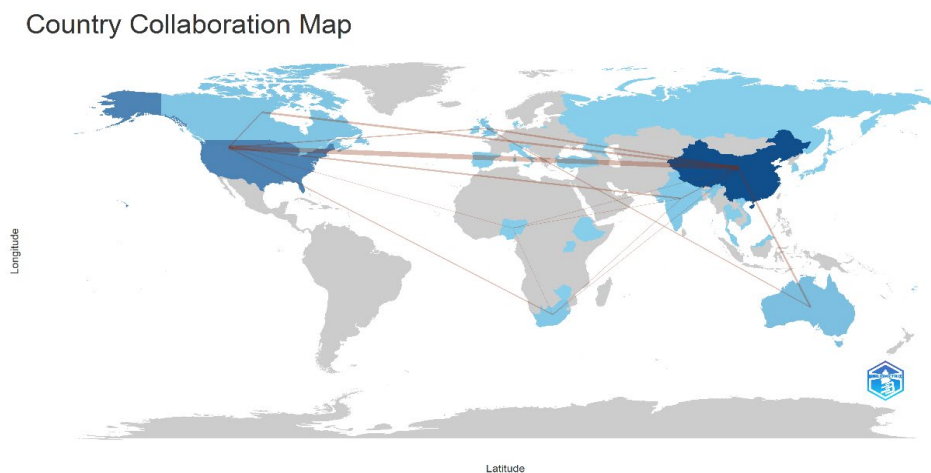


At the national level (Figure 3), China and the United States are the most prominent contributors. China leads with 280 author appearances, accounting for 48.8% of the total, followed by the United States with 174 appearances (30.3%). Other notable contributors include Australia (4.5%) and the United Kingdom (3.5%). The cumulative trend suggests that research activity from China and the U.S. has grown substantially and continues to dominate the field.

**INTERNATIONAL AND INSTITUTIONAL COLLABORATION**

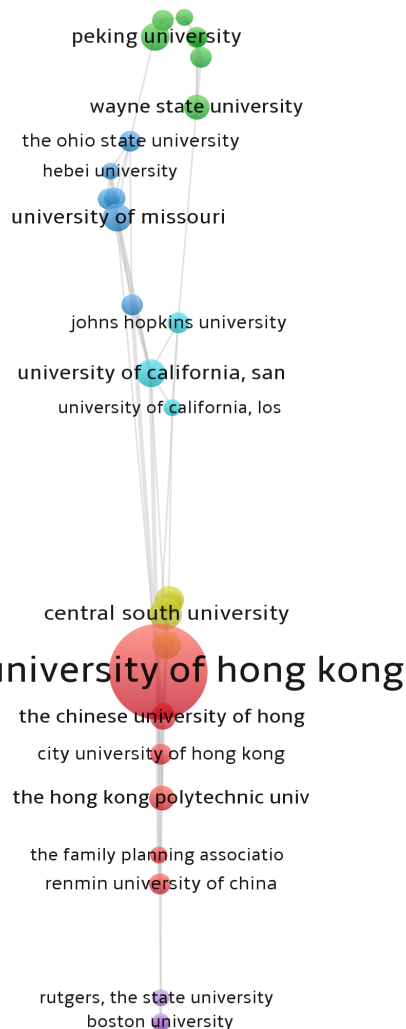
At the international level, the research landscape demonstrates a clear core-periphery collaboration structure (Figure 4). The strongest bilateral collaboration is between China and the United States, forming the central axis of the global scholarly network. These two countries also maintain partnerships with other major contributors, including Australia and the United Kingdom, creating a dual-core system that radiates outward.

**FIGURE 4. COUNTRY COLLABORATION MAP**



At the institutional level (Figure 5), The University of Hong Kong serves as a central hub, linking regional and international actors. It maintains strong connections with other Hong Kong institutions—such as The Chinese University of Hong Kong, City University, and Polytechnic University—as well as mainland universities like Central South University and Renmin University of China. It also collaborates with major U.S. institutions, including Johns Hopkins, Missouri, and Ohio State.

**FIGURE 5. INSTITUTIONAL CO-OCCURRENCE MAP**



### THEMATIC STRUCTURE AND KNOWLEDGE CLUSTERS

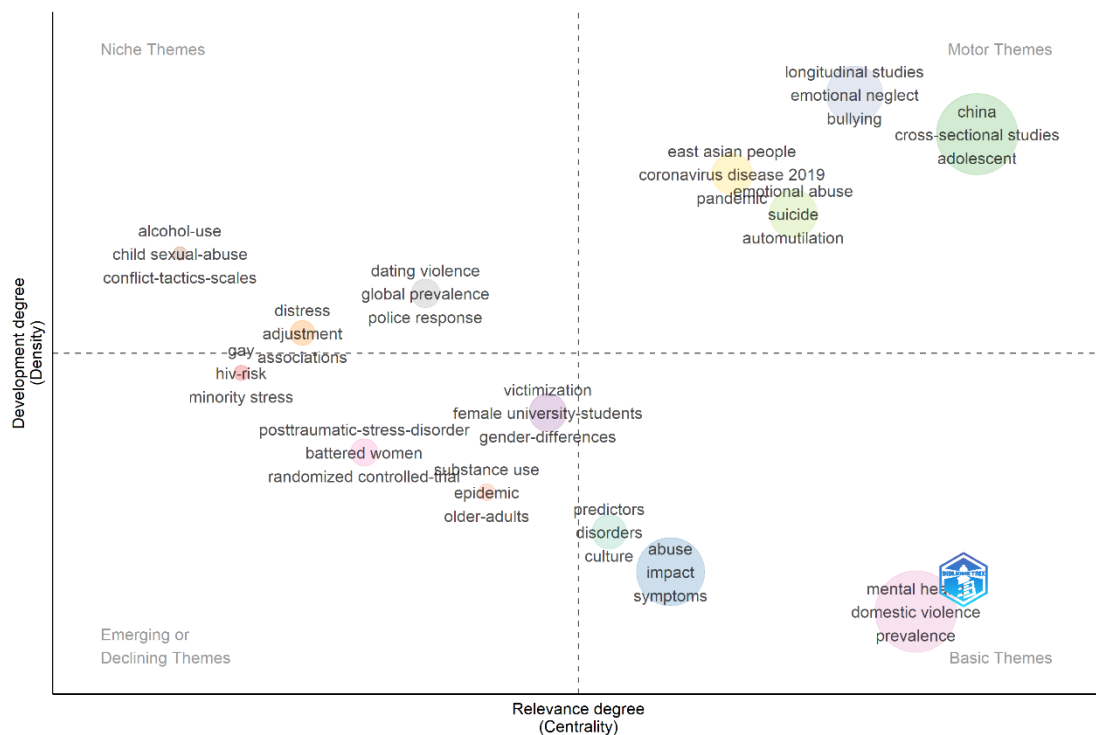
Five thematic clusters were identified through keyword co-occurrence analysis (Figure 6, Table 2). These include: psychological impacts and epidemiology (Cluster 1), perinatal mental health and social support (Cluster 2), high-risk and marginalized populations (Cluster 3), stress-related predictors of abuse (Cluster 4), and intervention strategies for pregnancy-related violence (Cluster 5). Together, they reflect a multifaceted knowledge structure linking symptomology, population needs, and applied responses.



## STRATEGIC THEMATIC MAP

A strategic thematic map was constructed using co-word analysis to evaluate the developmental stage and structural relevance of key research themes (Figure 7). This two-dimensional plot positions themes by centrality (interconnectedness) and density (internal cohesion), forming four quadrants that reflect varying degrees of thematic maturity and integration.

FIGURE 7. STRATEGIC THEMATIC MAP



The upper right quadrant contains motor themes—well-developed and structurally integrated. Terms such as “China,” “adolescent,” “cross-sectional studies,” “longitudinal studies,” and “bullying” suggest that youth mental health and population-level assessment form an empirically active domain.

The lower right quadrant features basic themes including “mental health,” “domestic violence,” “prevalence,” “depression,” and “psychological distress.” These function as conceptual anchors, broadly connected but less internally differentiated.

In the upper left quadrant, niche themes such as “alcohol use,” “child sexual abuse,” “substance misuse,” “conflict tactics scales,” and “intimate partner violence” indicate focused but less integrated areas of research.

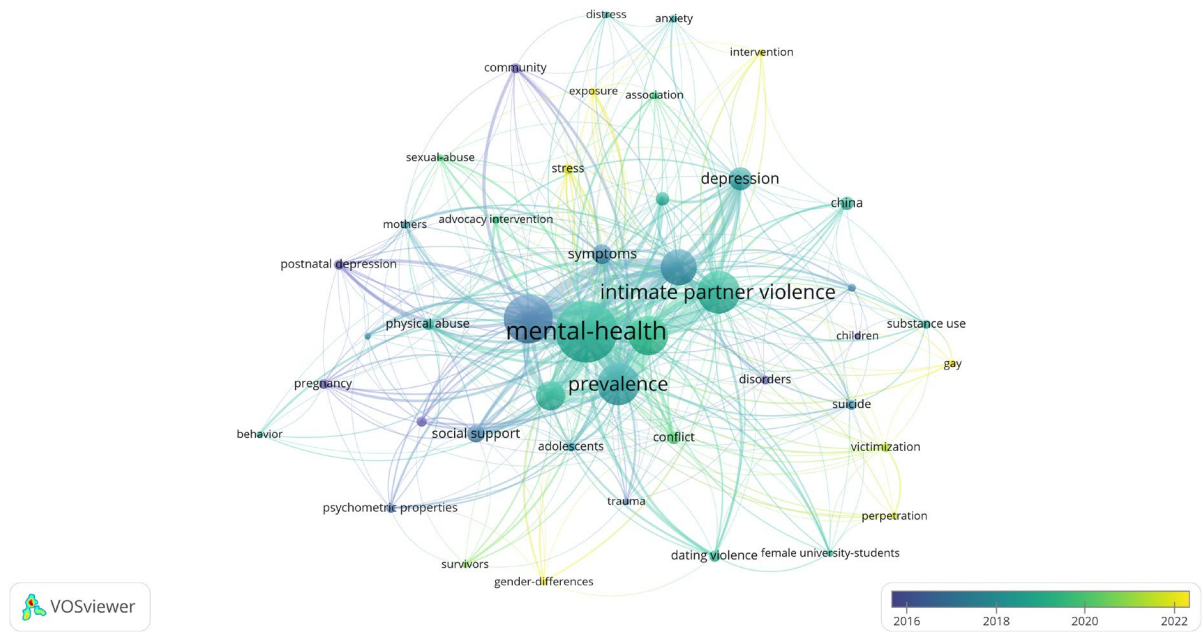
The lower left quadrant presents emerging or declining themes with limited connectivity and development, including “posttraumatic stress disorder,” “battered women,” “randomized controlled trial,” and “psychopathology.” While currently peripheral, these may signal underexplored or future growth areas.

Overall, the map shows a stable foundation of mental health research, with growing thematic momentum in adolescent-focused studies and methodological innovation.

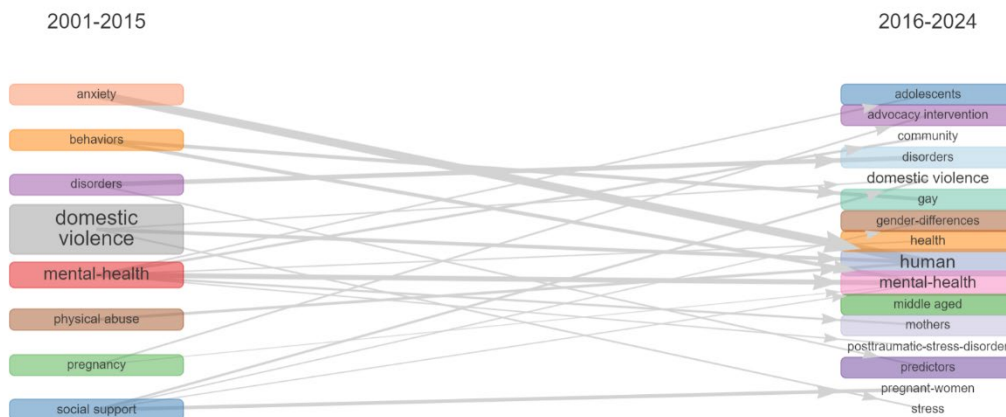
## THEMATIC EVOLUTION AND EMERGING TRENDS

To examine how research themes evolved over time, we divided the timeline into two phases—2001–2015 and 2016–2024—using the enactment of China’s Anti-Domestic Violence Law as a key inflection point. Keyword overlay visualization (Figure 8) and a Sankey diagram (Figure 9) reveal a transition from broad conceptual inquiry to more targeted, intervention-oriented themes.

**FIGURE 8. TEMPORAL OVERLAY VISUALIZATION OF KEYWORD CO-OCCURRENCE**



**FIGURE 9. THEMATIC EVOLUTION OF KEYWORDS OVER TIME VISUALIZED THROUGH A SANKEY DIAGRAM**



In the earlier period, dominant keywords included “domestic violence,” “mental health,” “anxiety,” “behaviors,” and “social support,” reflecting foundational concerns. These appear in cooler tones on the overlay map and on the left side of the Sankey diagram.

Since 2016, the thematic focus has become more differentiated and applied. While core concepts persist, newer terms such as “adolescents,” “advocacy intervention,” “posttraumatic stress disorder,” and “gender differences” highlight growing attention to trauma recovery, population-specific needs, and intervention design. These developments reflect growing research attention to how domestic violence impacts women across life stages, with particular concern for adolescents and the intergenerational transmission of trauma.

Overall, the evolution reflects a shift from documenting psychological outcomes to investigating causal mechanisms, risk factors, and evidence-based responses.

## DISCUSSION

This study offers the first bibliometric mapping of international research on domestic violence and women's mental health in the Chinese context. By integrating analyses of publication output, collaboration networks, and thematic evolution, it illustrates how a locally embedded issue has entered global academic discourse.

### POLICY RESONANCE AND SCHOLARLY GROWTH

A defining inflection point was the implementation of China's Anti-Domestic Violence Law in 2016[8], which catalyzed academic engagement by conferring institutional legitimacy on a once-private issue. Scholarly focus expanded from prevalence surveys to structural determinants and intervention design, signaling the law's role as both policy milestone and research trigger.

### COLLABORATION STRUCTURES AND KNOWLEDGE EXCHANGE

The field exhibits a dual-core collaboration structure, with China and the U.S. as central contributors and Hong Kong—especially The University of Hong Kong—acting as a critical bridge. This network facilitates theoretical and methodological exchange, supporting the contextual adaptation of trauma-informed models to Chinese sociocultural systems.

### THEMATIC EVOLUTION: FROM DESCRIPTION TO APPLICATION

Thematic analysis reveals a shift from broad descriptors (e.g., depression, anxiety, prevalence) to targeted themes such as PTSD, advocacy interventions, and gender differences. The rise of "adolescents" reflects growing attention to intergenerational trauma and developmental timing. Meanwhile, PTSD's prominence suggests a refinement of psychological constructs in research discourse.

Peripheral yet conceptually vital themes—including child sexual abuse, substance misuse, and HIV risk—underscore long-term psychological consequences and risk clustering. Early trauma exposure has been linked to adult victimization, often mediated through substance use and risky behaviors [20-23], necessitating integrated prevention strategies.

Cross-sectional designs still dominate, but the emergence of randomized controlled trials (RCTs) points to a methodological shift toward causal inference and intervention evaluation. This thematic shift towards "intervention" within the China-focused literature mirrors a diverse and evolving global landscape of solutions. International systematic reviews indicate that this landscape is multi-faceted, encompassing socio-economic empowerment models that combine financial independence with community support [11]; formal psychosocial interventions aimed at reducing survivors' symptoms of depression and PTSD [24]; and community-based participatory approaches that utilize group sessions to address safety and mental health needs [25]. This multi-dimensional global context provides a crucial benchmark for future analysis of the specific intervention types gaining prominence in the Chinese context and their cultural adaptability.

### IMPLICATIONS FOR RESEARCH AND POLICY

Building on this study's findings, future inquiry could be guided by several specific research questions. First, building directly on our finding that "intervention" is a prominent emerging theme, future studies should investigate what specific types of empowerment-based models are being applied in the Chinese context and how these global models are being culturally adapted [11]. Second, to add nuance to this intervention-focused agenda, future research could explore the extent to which the China-focused literature differentiates between improving mental health outcomes and reducing violence recurrence—a critical distinction highlighted in global meta-analyses [24]. Finally, moving beyond the structural mapping of collaboration networks, a crucial next step is to qualitatively examine the nature of these international partnerships and the degree to which they incorporate community-based participatory principles in their research process [25].

### STRENGTHS AND LIMITATIONS

This study's strength lies in its integrative design, combining data from WoS and Scopus and applying validated tools. Limitations include the exclusion of Chinese-language publications, the descriptive nature of bibliometric methods, and citation lag for recent work. Nonetheless, the findings highlight critical gaps in trauma services, intersectoral collaboration, and culturally tailored mental health responses—offering actionable insights for service planning and system design.

## CONCLUSION

This study provides the first comprehensive bibliometric overview of the international, English-language research on domestic violence and women's mental health in the Chinese context. Our findings reveal a field of rapidly expanding scholarly engagement, particularly after 2016 legal reforms, with a clear thematic evolution from descriptive work towards intervention-focused and trauma-informed models. This maturation of the research agenda presents both an opportunity and a challenge for health management.

Crucially, for health service managers and policymakers, this study does more than just summarize research; it provides a strategic map. It identifies key intellectual themes (e.g., empowerment models, psychosocial support), influential collaborative networks, and persistent research gaps. This map serves as a vital evidence base to inform the strategic planning, cross-sectoral integration, and cultural adaptation of mental health services designed to address the profound psychological consequences of domestic violence.

## FUNDING

This research did not receive any specific grant from funding agencies in the public, commercial, or not-for-profit sectors.

## CONFLICT OF INTEREST

The authors declare no competing interests.

## DATA AVAILABILITY STATEMENT

All data used in this study were retrieved in March 2025 from publicly accessible academic databases, including Web of Science (<https://www.webofscience.com/>) and Scopus (<https://www.scopus.com/>). All key results are presented in the manuscript through tables and figures. Supporting materials (e.g., cleaned CSV files and analysis scripts) are available from the corresponding author upon reasonable request.

## ETHICAL APPROVAL

This study did not involve human participants, animals, or the collection of primary data. Therefore, ethical approval was not required.

## ACKNOWLEDGEMENTS

The authors would like to thank the experts who provided recommendations on analytic tools and resources.

## References

1. World Health Organization. Violence against women [Internet]. Geneva: WHO; [cited 2025 May 30]. Available from: <https://www.who.int/news-room/fact-sheets/detail/violence-against-women>
2. Office on Violence Against Women (OVW), U.S. Department of Justice. Domestic Violence. Washington (DC): U.S. Department of Justice; 2022 Nov 1. Available: <https://www.justice.gov/ovw/domestic-violence> (Accessed 4/10/2025)
3. Centers for Disease Control and Prevention. About Intimate Partner Violence. Atlanta (GA): National Center for Injury Prevention and Control, CDC; 2024 May 16. Available: <https://www.cdc.gov/intimate-partner-violence/about/index.html> (Accessed 4/10/2025)
4. Chandan JS, Thomas T, Bradbury-Jones C, Russell R, Bandyopadhyay S, Nirantharakumar K. Female survivors of intimate partner violence and risk of depression, anxiety and serious mental illness. *Br J Psychiatry*. 2020 Oct;217(6):562–7. doi:10.1192/bjp.2019.124
5. Li X, Liu Y, Yao Y, Han Y, Zhang H, Chen W. Exposure to domestic violence and depressive symptoms in Chinese adolescents: Sleep problems as a mediator. *J Affect Disord*. 2022 Aug;310:17–24. doi:10.1016/j.jad.2022.04.114
6. Maji S, Bansod S, Singh T. Domestic violence during COVID-19 pandemic: The case for Indian women. *J Community Appl Soc Psychol*. 2022 May;32(3):374–81. doi:10.1002/casp.2501

7. Su Z, McDonnell D, Li Y, Bennett B, Šegalo S, Abbas R, et al. What “family affair?” Domestic violence awareness in China. *Front Public Health*. 2022 Mar 4;10:795841. doi:10.3389/fpubh.2022.795841
8. Song Y. Zhonghua Renmin Gongheguo Fan Jiating Baoli Fa (Anti-Domestic Violence Law of the People's Republic of China) [in Chinese] [Internet]. Beijing: State Council of the People's Republic of China; 2015 Dec 27 [cited 2025 May 30]. Available from: [https://www.gov.cn/zhengce/2015-12/28/content\\_5029898.htm](https://www.gov.cn/zhengce/2015-12/28/content_5029898.htm)
9. Su L. China Center Fellow writes working paper on domestic violence [Internet]. New Haven: Yale Law School Paul Tsai China Center; 2017 Jun [cited 2025 May 30]. Available from: <https://law.yale.edu/yls-today/news/china-center-fellow-writes-working-paper-domestic-violence>
10. Masih M, Wagstaff C, Kaur-Aujla H. The global psychological and physical effects of domestic abuse and violence on South Asian women: a qualitative systematic review. *Front Glob Womens Health* 2024;5:1365883. doi:10.3389/fgwh.2024.1365883
11. Kiani Z, Simbar M, Fakari FR, Kazemi S, Ghasemi V, Azimi N, Mokhtariyan T, Bazzazian S. A systematic review: Empowerment interventions to reduce domestic violence? *Aggress Violent Behav* 2021;58:101585. doi:10.1016/j.avb.2021.101585
12. Costa D, Scharpf F, Weiss A, Ayanian AH, Bozorgmehr K. Intimate partner violence during COVID-19: systematic review and meta-analysis according to methodological choices. *BMC Public Health* 2024;24:1. doi:10.1186/s12889-024-17802-9
13. Yang T, Poon AWC, Breckenridge J. Estimating the prevalence of intimate partner violence in Mainland China – Insights and challenges. *J Fam Viol*. 2019 Feb;34(2):89–100. doi:10.1007/s10896-018-9989-9
14. Zhao Q, Huang Y, Sun M, Li Y, Lommel LL. Risk factors associated with intimate partner violence against Chinese women: A systematic review. *Int J Environ Res Public Health*. 2022 Dec;19(23):16258. doi:10.3390/ijerph192316258
15. Ogbe E, Harmon S, van den Bergh R, Degomme O. A systematic review of intimate partner violence interventions focused on improving social support and/or mental health outcomes of survivors. *PLoS One*. 2020 Jun;15(6):e0235177. doi:10.1371/journal.pone.0235177
16. Donthu N, Kumar S, Mukherjee D, Pandey N, Lim WM. How to conduct a bibliometric analysis: An overview and guidelines. *J Bus Res*. 2021 Sep;133:285–96. doi:10.1016/j.jbusres.2021.04.070
17. Aria M, Cuccurullo C. bibliometrix: An R-tool for comprehensive science mapping analysis. *J Informetr*. 2017 Nov;11(4):959–75. doi:10.1016/j.joi.2017.08.007
18. Gan YN, Li DD, Robinson N, Liu JP. Practical guidance on bibliometric analysis and mapping knowledge domains methodology – A summary. *Eur J Integr Med*. 2022 Dec;56:102203. doi:10.1016/j.eujim.2022.102203
19. R Core Team. The R Project for Statistical Computing [Internet]. Vienna (Austria): R Foundation for Statistical Computing; [cited 2025 May 30]. Available from: <https://www.r-project.org/>
20. Fulu E, Jewkes R, Roselli T, Garcia-Moreno C. Prevalence of and factors associated with male perpetration of intimate partner violence: Findings from the UN multi-country cross-sectional study on men and violence in Asia and the Pacific. *Lancet Glob Health*. 2013 Dec;1(4):e187–207. doi:10.1016/S2214-109X(13)70074-3
21. Fulu E, Miedema S, Roselli T, McCook S, Chan KL, Haardörfer R, et al. Pathways between childhood trauma, intimate partner violence, and harsh parenting: Findings from the UN multi-country study on men and violence in Asia and the Pacific. *Lancet Glob Health*. 2017 May;5(5):e512–22. doi:10.1016/S2214-109X(17)30103-1
22. Decker MR, Peitzmeier S, Olumide A, Acharya R, Ojengbede O, Covarrubias L, et al. Prevalence and health impact of intimate partner violence and non-partner sexual violence among female adolescents aged 15–19 years in vulnerable urban environments: A multi-country study. *J Adolesc Health*. 2014 Dec;55(6 Suppl):S58–67. doi:10.1016/j.jadohealth.2014.08.022
23. Varma D, Chandra PS, Thomas T, Carey MP. Intimate partner violence and sexual coercion among pregnant women in India: Relationship with depression and post-traumatic stress disorder. *J Affect Disord*. 2007 Sep;102(1–3):227–35. doi:10.1016/j.jad.2006.09.026
24. Micklitz HM, Glass CM, Bengel J, Sander LB. Efficacy of psychosocial interventions for survivors of intimate partner violence: A systematic review and meta-analysis. *Trauma, Violence, & Abuse* 2023;25(2):1000–1017. doi:10.1177/15248380231169481. (Original work published 2024)

25. Ragavan MI, Thomas K, Medzhitova J, Brewer N, Goodman LA, Bair-Merritt M. A systematic review of community-based research interventions for domestic violence survivors. *Psychology of Violence* 2019;9(2):139–155. doi:10.1037/vio0000183